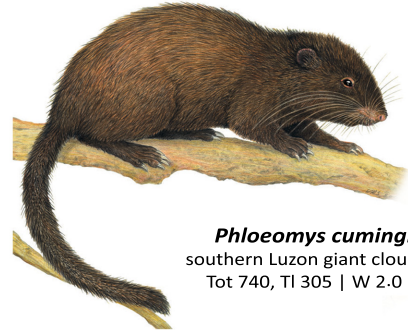


Native Mammals of Luzon Island



Phloeomys pallidus
northern Luzon giant cloud rat
Tot 760, TI 340 | W 2.5 kg



Phloeomys cumingi
southern Luzon giant cloud rat
Tot 740, TI 305 | W 2.0 kg



Carpomys melanurus
greater dwarf cloud rat
Tot 365, TI 180 | W 165 g



Archboldomys maximus
large Cordillera shrew-mouse
Tot 220, TI 102 | W 50 g



Rhynchomys soricoides
Cordillera shrew-rat
Tot 345, TI 150 | W 200 g



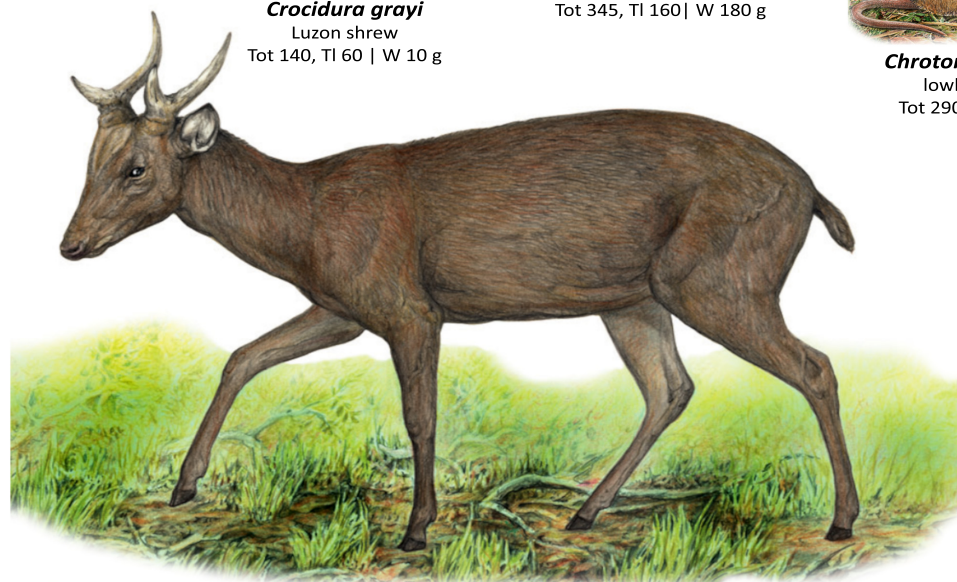
Batomys granti
Cordillera hairy-tailed rat
Tot 350, TI 160 | W 210 g



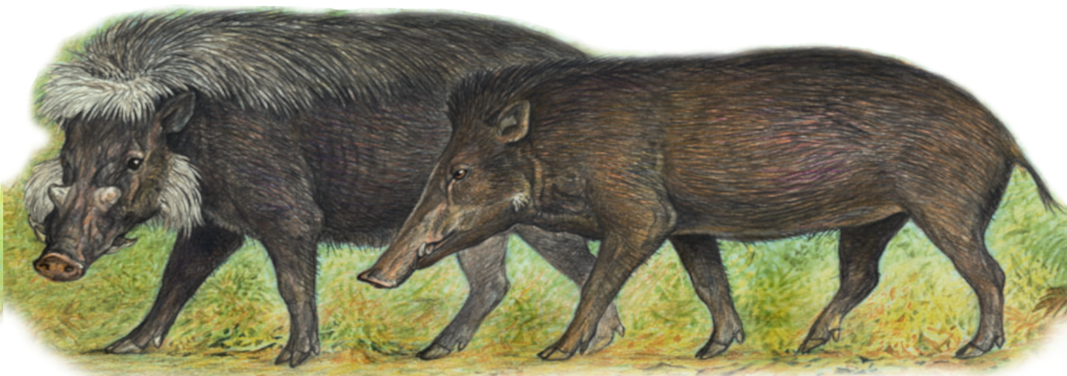
Batomys dentatus
large toothed batomys
Tot 380, TI 185 | W unknown



Crocidura grayi
Luzon shrew
Tot 140, TI 60 | W 10 g



Rusa marianna
Philippine brown deer
HB 100-150 | W 40-60 kg



Sus philippensis
Philippine warty pig
HB 110-120 cm



Crateromys schadenbergi
Luzon bushy-tailed cloud rat
Tot 740, TI 370 | W 1.45 kg



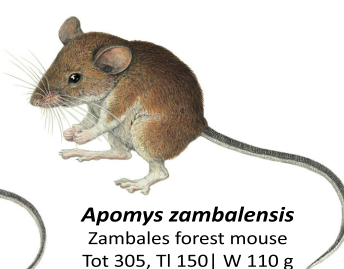
Apomys iridensis
Southern Sierra Madre Forest Mouse
Tot 300, TI 150 | W 95 g



Apomys magnus
large Banahao forest mouse
Tot 300, TI 148 | W 110 g



Apomys banahao
Banahao forest mouse
Tot 275, TI 128 | W 85 g



Apomys zambalensis
Zambales forest mouse
Tot 305, TI 150 | W 110 g



Carpomys phaeurus
lesser dwarf cloud rat
Tot 330, TI 160 | W 123 g



Apomys abrae
Cordillera pine forest mouse
Tot 285, TI 148 | W 75 g



Apomys aurorae
Aurora forest mouse
Tot 285, TI 145 | W 85 g



Apomys minganensis
Mingan forest mouse
Tot 270, TI 130 | W 85 g



Abditomys latidens
Luzon broad-toothed rat
Tot 480, TI 260 | W unknown



Archboldomys luzonensis
Mt. Isarog shrew-mouse
Tot 180, TI 75 | W 35 g



Apomys datae
Codillera forest mouse
Tot 280, TI 138 | W 95 g



Apomys sierrae
Northern Sierra Madre forest mouse
Tot 295, TI 145 | W 100 g



Apomys brownorum
Tapulao forest mouse
Tot 248, TI 112 | W 75 g



Musseromys inopinatus
Amuyao tree-mouse
Tot 165, TI 85 | W 19 g



Musseromys gulantang
Banahao tree-mouse
Tot 178, TI 101 | W 15.5 g



Musseromys beneficus
Mt. Pulag tree-mouse
Tot 160, TI 80 | W 21 g



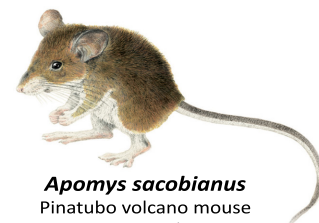
Musseromys anacua
Sierra Madre tree-mouse
Tot 165, TI 85 | W 20 g



Rhynchomys isarogensis
Isarog shrew-rat
Tot 300, 120 | W 140 g



Apomys musculus
least Philippine forest mouse
Tot 205, TI 115 | W 22 g



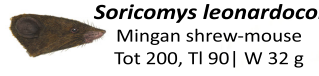
Apomys sacobianus
Pinatubo volcano mouse
Tot 312, TI 145 | W 95 g



Apomys microdon
Small Luzon forest mouse
Tot 245, TI 140 | W 38 g



Rhynchomys banahao
Banahao shrew-rat
Tot 310, TI 128 | W 145 g



Soricomys leonardocoi
Mingan shrew-mouse
Tot 200, TI 90 | W 32 g



Chrotomys gonzalesi
Isarog striped rat
Tot 285, TI 98 | W 170 g



Rhynchomys tapulao
Zambales shrew-rat
Tot 300, TI 125 | W 145 g



Soricomys montanus
Southern Cordillera shrew-mouse
Tot 192, TI 94 | W 28 g



Soricomys kalinga
Kalinga shrew-mouse
Tot 200, TI 95 | W 27 g



Tryphomys adustus
Luzon short-nosed rat
Tot 360, TI 165 | W 200 g



Chrotomys silaceus
silver earth-rat
Tot 285, TI 115 | W 145 g



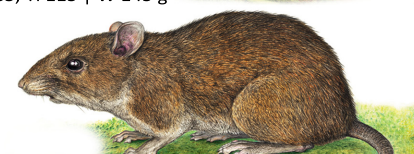
Batomys uragon
Mt. Isarog hairy tailed rat
Tot 345, TI 160 | W 180 g



Chrotomys mindorensis
lowland striped rat
Tot 290, TI 115 | W 185 g



Chrotomys whiteheadi
Cordillera striped rat
Tot 290, TI 120 | W 180 g



Bullimus luzonicus
large Luzon forest rat
Tot 480, TI 220 | W 480 g



Rattus everetti
common Philippine forest rat
Tot 460, TI 220 | W 360 g



With about 56 species of native, non-flying mammals, Luzon Island has one of the most diverse mammal faunas on any island; only much larger islands have more species. The Philippine brown deer and warty pig occur in the Greater Mindanao faunal region as well as Luzon, but nearly all other species live only on Luzon. But few are widespread - most species live only in one of the many "sky islands" of cool, wet forest high in the scattered mountain ranges on Luzon. Most are small animals that live only in the forest, where they are crucial parts of the web of life that sustain the critically important watersheds of Luzon. For additional details, use the book "The Mammals of Luzon Island: Biogeography and Natural History of a Philippine Fauna" by L. R. Heaney, D. S. Balete, and E. A. Rickart (2016. Johns Hopkins University Press, Baltimore). All illustrations by V. Simeonovski; poster preparation and layout by L. Uí Dhálaigh. Special thanks to the Biodiversity Management Bureau, DENR; National Museum of the Philippines; Institute of Biology, University of the Philippines - Diliman; Philippine Tropical Forest Conservation Foundation; the Negaunee Foundation; and the Brown Fund for Mammal Research at the Field Museum. Copyright, Field Museum of Natural History, 2018. Abbreviations: Tot - Total length, TI - Tail length, HB - Head/Body length, W - Weight